



HOTT SCAN

3D room scan
in just 2 minutes!



Photo Survey

For roof
and facade



1420

130

920

HottScan Room-Scanner

The complete solution of superlatives:
HottScan is the ultimate tool
for room and building acquisition.

Features

- Tachymeter function: individual measurement spots can be acquired on the fly
- Images and measurement information are available at any time for any detail
- Detailed 360° panoramic image of every scanned room
- Entire photo documentation
- Preview panorama for on-site check with HottScan App
- Data transfer via USB-Stick or WiFi

Your benefits

- Eliminates multiple visits to building sites
- Portability (lightweight) and long running time
- Battery exchange within seconds



INNOVATION AWARD – bautec 2018

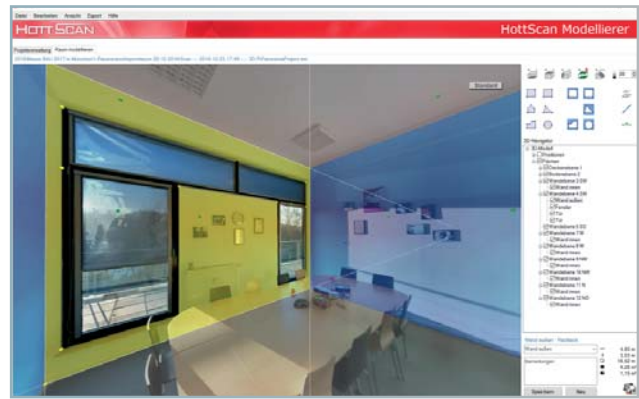
Awarded were products from the construction sector for its innovative approach, the practical benefit and the technical feasibility.

HottScan Room-Modeller Software

The HottScan Modeller software provides extensive and convenient creation of plains and areas for flawless achievement of a 3D model. The easy to use software will help you to evaluate and document dimensions, individual spots and verification of complex conditions. Once the floor or ceiling is drawn, the software can add hidden parts of the room at the push of the prism button. Component types can be assigned to each part of the building (walls, ceilings etc.)and openings (doors/windows etc.).

Range of functions

- Hierarchical project administration
- Easy to use modelling in the first person perspective
- Manual or automatic levelling
- Export of quantity analytics as CSV file
- Geometric export in standard CAD formats DXF/DWG and Collada



€ 1,000

HottScan Projects CAD-Modeller Software

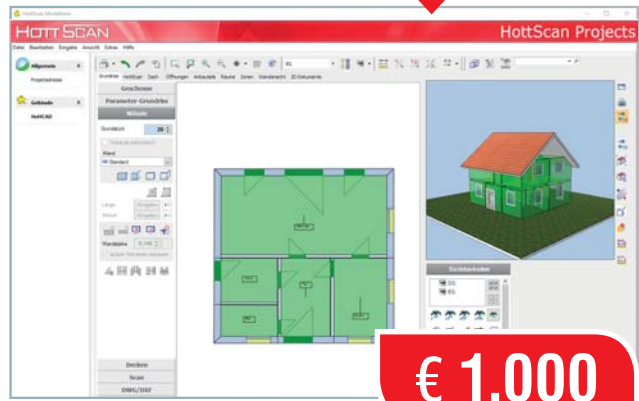
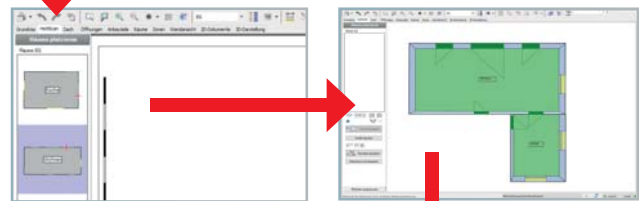
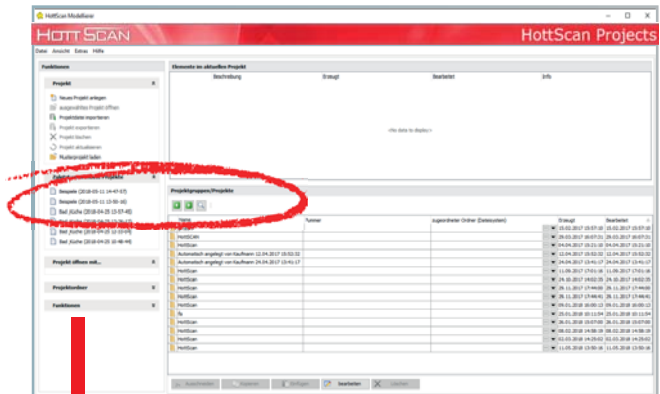
HottScan Projects composes complete floors and buildings with the exports of the HottScan Room Modeller. Rooms can be selected and positioned with drag and drop. The user profits from the automatic docking function which locates and merge room together based on openings such as doors or windows.

With rotation and shift functions as well as functions for characterizing walls the aquisition of a building will become a simple task.

The building model can be modified with the functionalities of the HottCAD and is the basis for the following simulation and calculation of the HS/ETU portfolio.

Range of functions

- Allocation of U-values incl. catalogue of building elements
- 3D building model with zoning indication
- Detailed 2D documentation with dimensions and section indication etc.
- Individual calculation of volumes, areas and masses
- Room list export function in Excel
- Building sections and groundplan
- IFC Import and Export (available with valid maintenance contract)
- Systems planning (HVAC) in 3D building model



€ 1,000

BIM-App

If it comes to BIM based planning process the BIM-App is essential for an efficient and convenient on-site building acquisition.

The acquired building data can be transferred to HottCAD and is the basis for energy-efficient projects such as new construction, redevelopment and HVAC.

- Simple and efficient room and building acquisition
- Ground/ floorplan in 2D and 3D
- Building model in 3D view
- Secured data transfer via SSL encryption

bimCAD



Photo Survey

Do you want to make a quick and customised proposal but you don't have time to take extensive measurements on-site? Or do you just want to get through more site visits and generate more proposals in a day? Photo Survey can help you generate surveys using the pictures from any modern digital camera or smartphone.

You could even ask your prospective customer to send digital images of their building with a couple of measurements (e.g. a window or wall dimension). Read these images into the Photo Survey software on your Windows PC and you can immediately make a reliable assessment of the building's geometry.

Quickly calculate how many PV or solar panels will fit, what the nett area of the building envelope is or how much plaster or paint you'll need.

Range of functions

- Identification of dimensions, including measurements of facades and roofs
- Data transfer to ETU PV simulation software
- Digital projection of solar panels onto the image of the building, showing what will it look like after installation
- Change facade and windows/doors colours with colours from the BRILLUX catalogue
- Export building measurements to Excel
- Generates a list of elements
- Calculation of areas
- Drag-and-drop colours onto the image



€ 299

Starter-Kit

- HottScan 3D Room Scanner** € 6,999
(including tripod, battery, recharger, USB-Stick, HottScan-App)
- HottScan Room Modeller** € 1,000
HottScan Modeller software provides extensive and convenient creation of plains and areas for flawless achievement of a 3D model. Export of quantity analytics as CSV file. Geometric export in standard CAD formats DXF/DWG and Collada.

Add-on modules

- HottScan Projects (CAD Modeller)** € 1,000
HottScan Projects composes complete floors and buildings with the exports of the HottScan Room Modeller. The building model can be modified with the functionalities of **HottCAD** and is the basis for the following simulation and calculation of the HS/ETU portfolio.
- Export-Interface** € 250
The export interface enables the data transfer of the room modeler to CAD applications via xml.-file.
- BIM-App** € 49
Simple and efficient building acquisition
- Photo Survey** € 299
Photographic building shot with digital cameras or smartphones. Identification of dimensions, including measurements of facades and roofs.

Minimum system requirements: Operating system (64-Bit) Microsoft Windows 7, 8 (except Windows RT) and 10, with latest Service Pack, RAM: 8 GB, recommended 16 GB. Detailed system requirements available for each product at www.hott-scan.com. Data exchange within the program is only available with the latest versions of the programs in question. Our terms, conditions and apply together with our extended provisions for online products (www.hott-scan.com). Prices exclusive of VAT and subject to change. Offer does not apply retrospectively to previous orders. Discounts cannot be combined. Further agreements must be made in the written form.

Declaration of consent under data protection law

I agree that Hottgenroth Software GmbH & Co. KG and its affiliated companies may store and use my personal data to create and send offers and advertising information by post, e-mail, newsletter and telephone. You can find further information on this in our data protection declaration. You can revoke this consent at any time by sending a short message by e-mail to datenschutz@hottgenroth.de, on our homepage or by post.

product video
www.hott-scan.com

Send your **order** by fax to
+49 221 70 99 33 44

E-mail

Company/Organisation

Surname/First Name

Address

City Postcode Country

Phone Number

Fax

X Place/Date/Signature

VAT ID Number Reference Nr

Technical Data

Room Scanner HottScan HS-1

Featured angle-range	Measurement range	347° horizontal, 180° vertical
	Relative accuracy	0.01°
Featured laser-distance measurer	Type	co-axial, visible red-laser, < 1 mW, IEC 60825-1:2003-10
	Life expectancy	> 50.000 h
	Measurement range	0.05-80 m
	Laser class	2
	∅ Laser-dot (on distance)	5 m: 4mm; 10 m: 8mm; 50 meters: 28x14mm;
	Accuracy	+/- 1 mm, depending on distance, surface & light conditions
Camera	Resolution	(5 Megapixels) 2592 x 1944 (h x v)
	Flare angle	about 54° x 41° (h x v)
Controls	User interface	Control panel with soft-touch buttons and LED illumination / battery capacity / status display and error indicator
Data transfer	USB	32 GB USB flash drive
	WiFi	802.11 b/g/n, 2,4 GHz Wireless LAN
	Range	50 m depending on environmental conditions
Power supply	Mains adapter	14.8V – 1.3A (at discharge of 16.8V), primary voltage: 100 V - 240 V, 19.5 VA, 50/60 Hz
	Battery	operation between 11.2 - 16.8V
	Running time	up to 11.5 hours depending on use of LED lighting; typical running time is approx. 8 hours
Environmental conditions	Operating ambient temperature	operation and battery charging: +0° to +40° C
	Storage	-20° to +50° C
	Dust and moisture	IP 40
Special features	<ul style="list-style-type: none">■ Hot Swap: The battery can be exchanged, within ± 30 seconds, during operation.■ The integrated LED lighting offers support in dark conditions.■ Portability: The low weight (approx. 4.2 kg) in conjunction with a foldable tripod makes the HottScan HS-1 a handy companion for on-site assessments and is easy to service and maintain. The scanner is delivered in a robust flight case.	

Software HottScan Modeller

- Easy 3D modelling from the personal PoV
- Export of quantity analytics as CSV file
- Geometric export in standard CAD formats DXF/DWG and Collada

Software HottScan Projects (CAD-Modeller)

- HottScan Projects composes complete floors and buildings with the exports of the HottScan Room Modeller.
- The building model can be modified with the functionalities of the HottCAD and is the basis for the following simulation and calculation of the HS/ETU portfolio.
- IFC Import and Export (available with valid maintenance contract)

► For further information and a product video see www.hottscan.de